

DETAIL "L"

ANCHOR LOCATIONS (OTHER SIDE IS OPPOSITE)

DETAIL "K"

ANCHOR LOCATIONS (OTHER SIDE IS OPPOSITE)

VIEW J-J

SCALE: 1/8

BUMPER PLATE ASSY'S (ONE EACH END)

MATERIAL: H.R. STEEL (BY OTHERS)

SECTION N-N

SCALE: 1/8

DETAIL ITEM S1

AT ANCHOR LOCATIONS (FORM TO INSIDE DIMENSIONS)

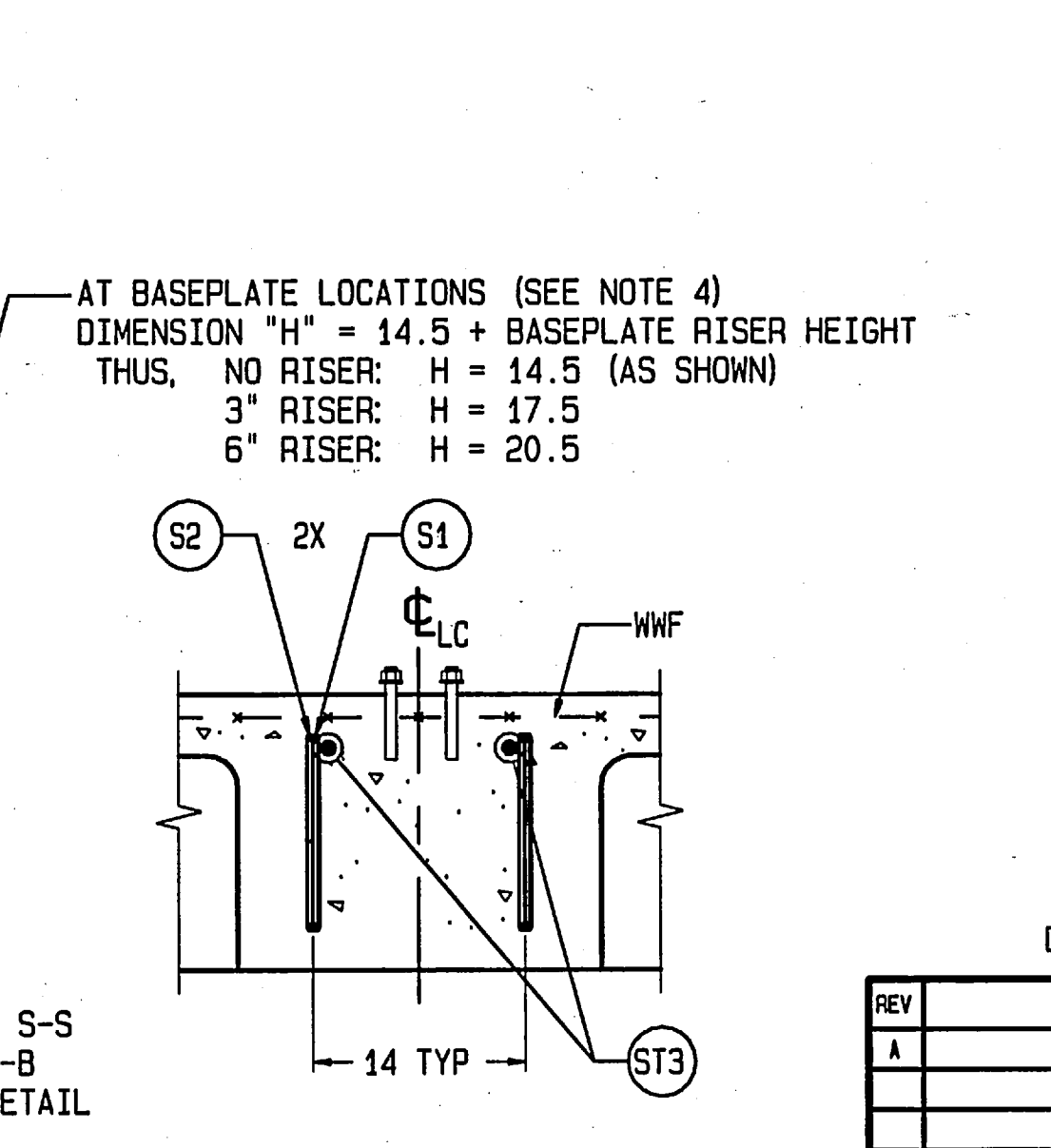
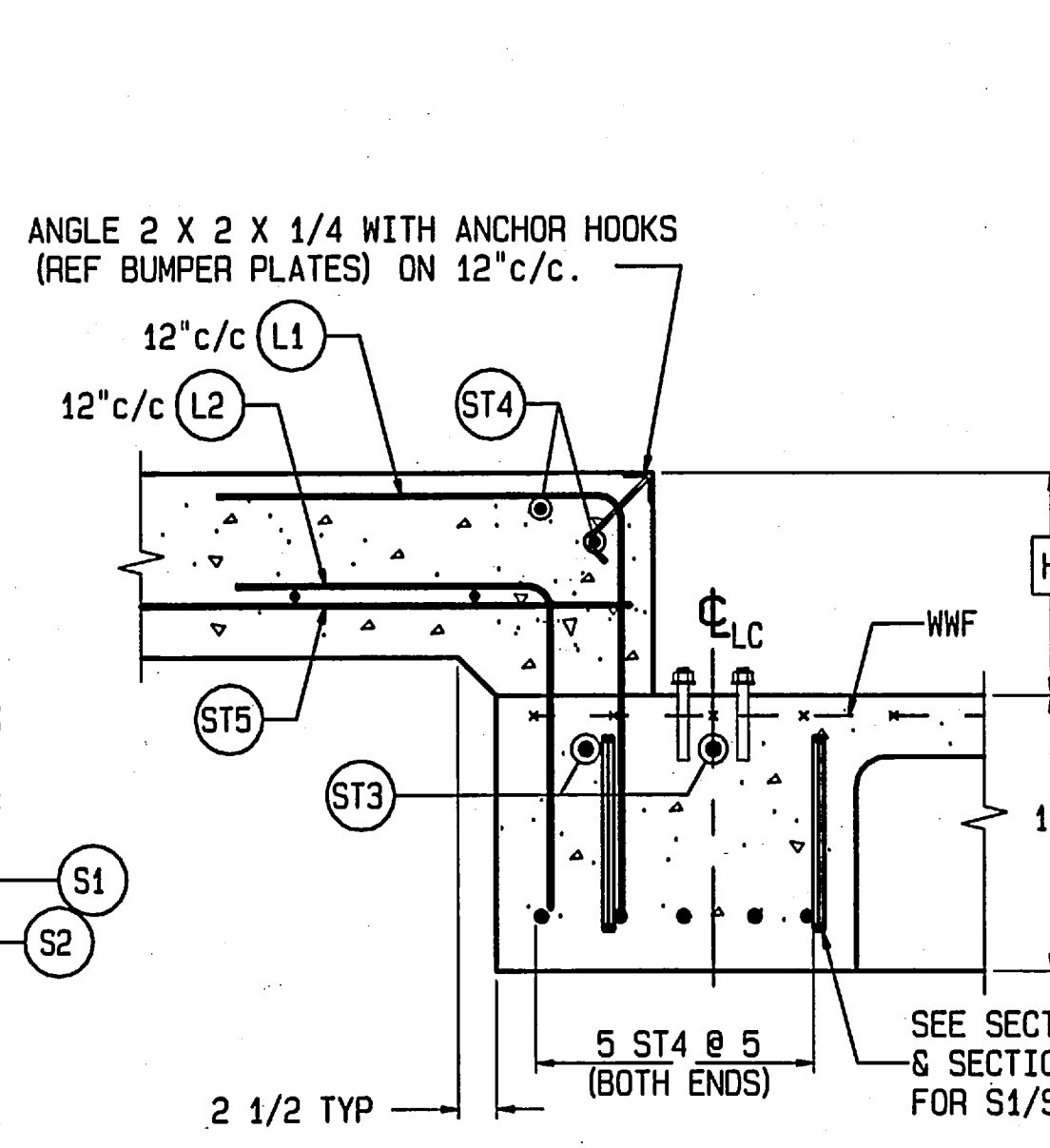
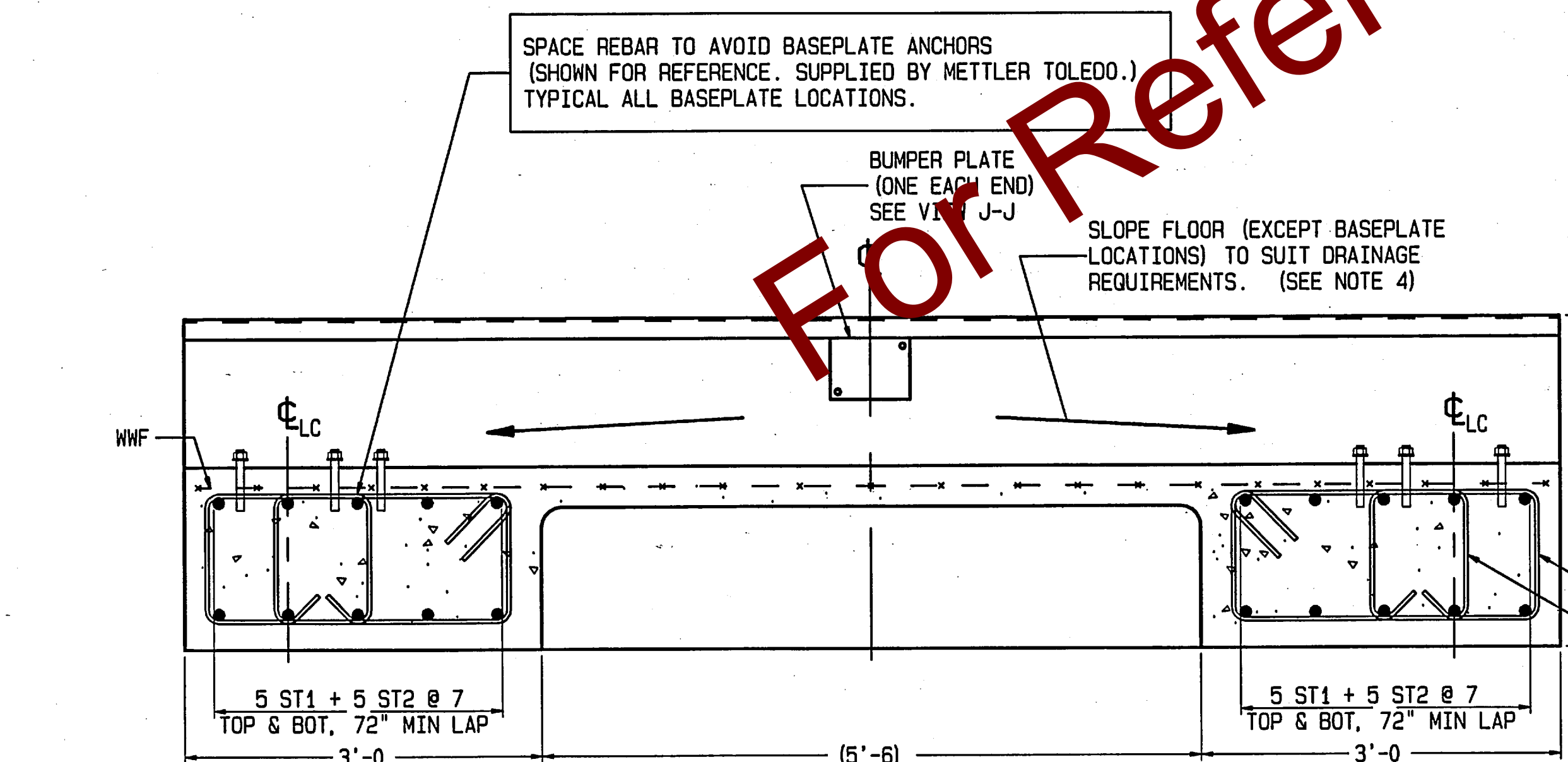
DETAIL ITEM S2

AT ANCHOR LOCATIONS (FORM TO INSIDE DIMENSIONS)

SECTION S-S

BOTH ENDS OF BOTH MAIN BEAMS (4 PLACES TOTAL)

MATERIAL SUMMARY	
CONCRETE (CU. YDS.)	40
REINFORCING STEEL (LBS)	5389
WWF: 6x6_W1.4xW1.4 (SQ. FT.)	850



- NOTES:**
- 1) USE MINIMUM 3000 PSI STRENGTH CONCRETE AT 28 DAYS WITH 5-7% AIR ENTRAINMENT.
 - 2) USE MINIMUM 60KSI YIELD DEFORMED REINFORCING STEEL. REBAR MINIMUM DEPTH OF COVER SHOULD BE IN ACCORDANCE WITH THE LATEST ACI BUILDING CODE REQUIREMENTS FOR STRUCTURAL CONCRETE (ACI 318-SECTION 7.7). UNLESS OTHERWISE SPECIFIED.
 - 3) FOUNDATION REQUIRES 1500 PSF RATED SOIL.
 - 4) TOP OF CONCRETE AT BASEPLATE LOCATIONS TO BE LEVEL AND IN ONE PLANE $\pm 1/8"$.
 - 5) DIAGONAL MEASUREMENTS ENDWALL TO ENDWALL MUST BE EQUAL WITHIN $1/2"$.
 - 6) BASEPLATE ANCHORS TO BE SUPPLIED BY METTLER TOLEDO. USE BASEPLATES AS TEMPLATES TO LOCATE ANCHORS DURING SCALE INSTALLATION.
 - 7) RAMP LENGTH: -PER LOCAL REGULATIONS -1/2" SLOPE PER FOOT TYPICAL
 - 8) CONTRACTOR SUPPLIES:
 - EXCAVATION
 - REINFORCING STEEL
 - CURB ANGLE ASSEMBLIES (SECT C-C)
 - CONCRETE AND FORMS
 - 1 1/2" DIA CONDUIT
 - BUMPER PLATE ASSEMBLIES (VIEWS J-J & N-N)

DRAWING IS TO SCALE ONLY WHEN BORDER MEASURES 22-7/8" X 35" (FULL SIZE)

REV	CHANGE	BY	DATE	SCALE .02
A	ST4 WAS 20	ADF	12/15/09	DATE 10/22/09
				DRN ADF APPR JAT
				TITLE VTC221 FDN, BEAM SLAB, 70' X 11' (4-MODULE) W/ RISER OPTION
				UNLESS OTHERWISE SPECIFIED, ALL DIMENSIONS ARE IN INCHES, AND DIMENSIONAL TOLERANCES ARE: FRACTIONAL .XX .02 .XXX .005 DECIMAL .XXX .005 ANGULAR .5°
				THIS PRINT IS FURNISHED WITH THE UNDERSTANDING THAT THE ESSENCE THEREOF WILL NOT BE REPRODUCED IN WHOLE OR IN PART WITHOUT WRITTEN AUTHORIZATION OF METTLER TOLEDO, INC. ALL DESIGNS ARE THE PROPERTY OF METTLER TOLEDO, INC. AND WILL BE PROTECTED BY PATENTS.
				TC207812
				REV A